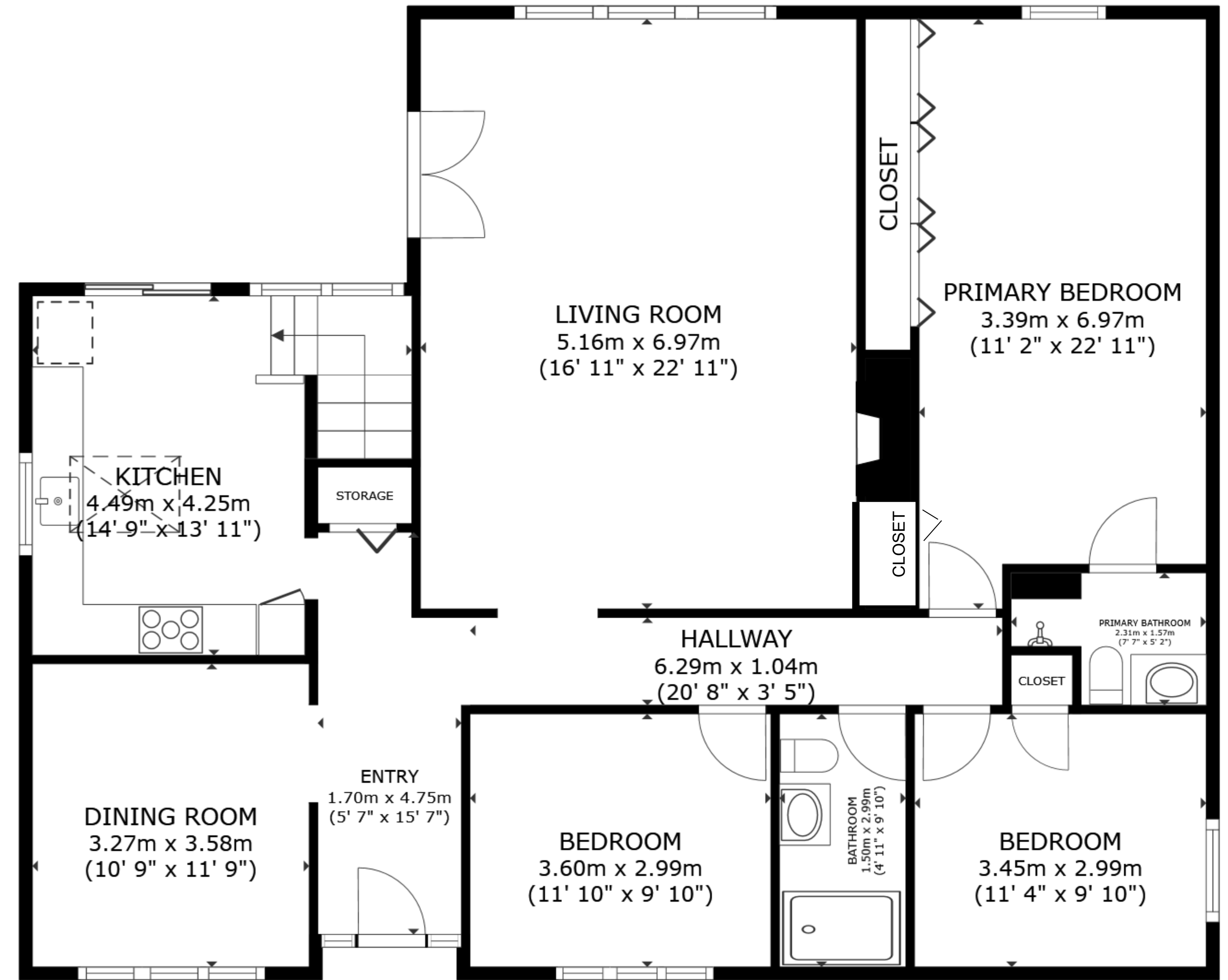


FLOOR 1



FLOOR 2

GROSS INTERNAL AREA

FLOOR 1: 1,649.68 sqft

FLOOR 2: 1,623.24 sqft

TOTAL: 3,272.92 sqft

Sqft has been advanced by 8% to accommodate exterior wall. SIZES AND DIMENSIONS ARE APPROXIMATE, ACTUAL MAY VARY.